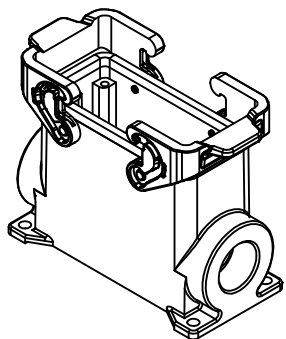
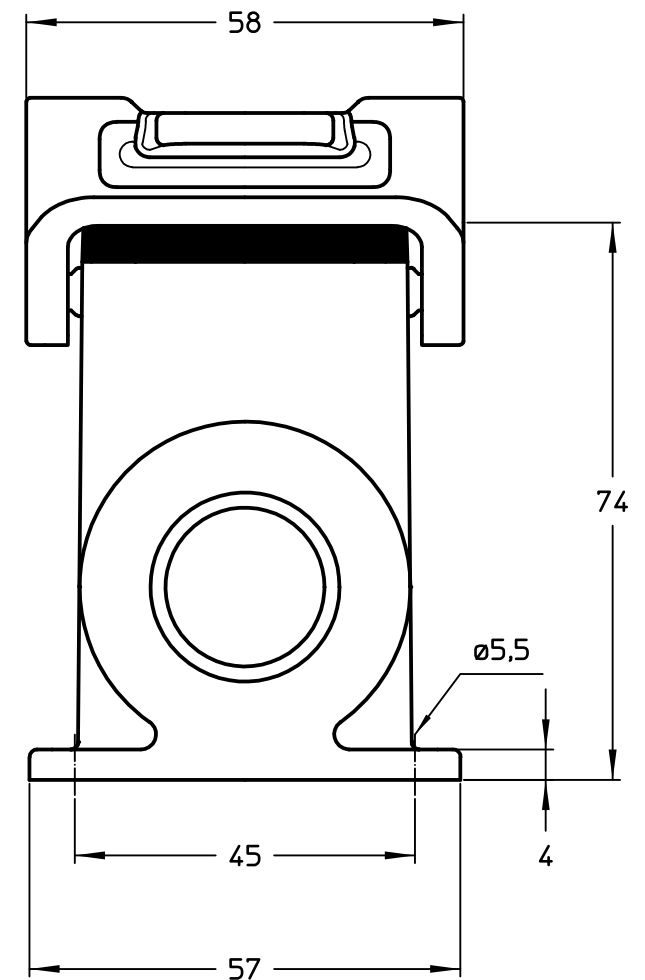
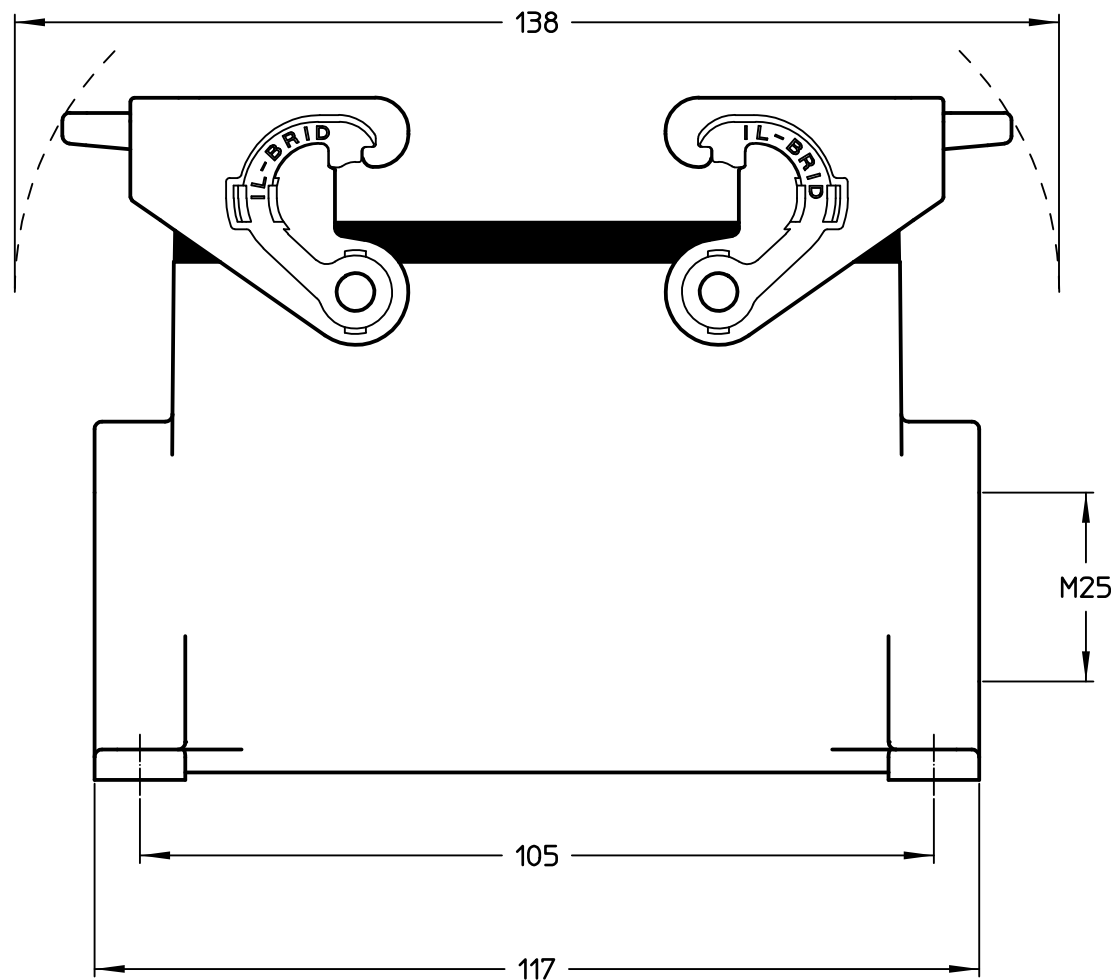


Diritti riservati All rights reserved



	Dimensions in mm
Original Size A4	
Date 01/03/22	
Sign. G. Renna	

Simplified representation with dimensions without tolerance

MLAP 16.25  
surface mounting housing, size "77.27", 1x M25 side entry,  
with 2 IL-BRID levers

Scale  
1:1

